



Energy Programs Office

Pennsylvania Department of Environmental Protection

Local Climate Action and Shared Energy Manager

April 17, 2023

Josh Shapiro, Governor

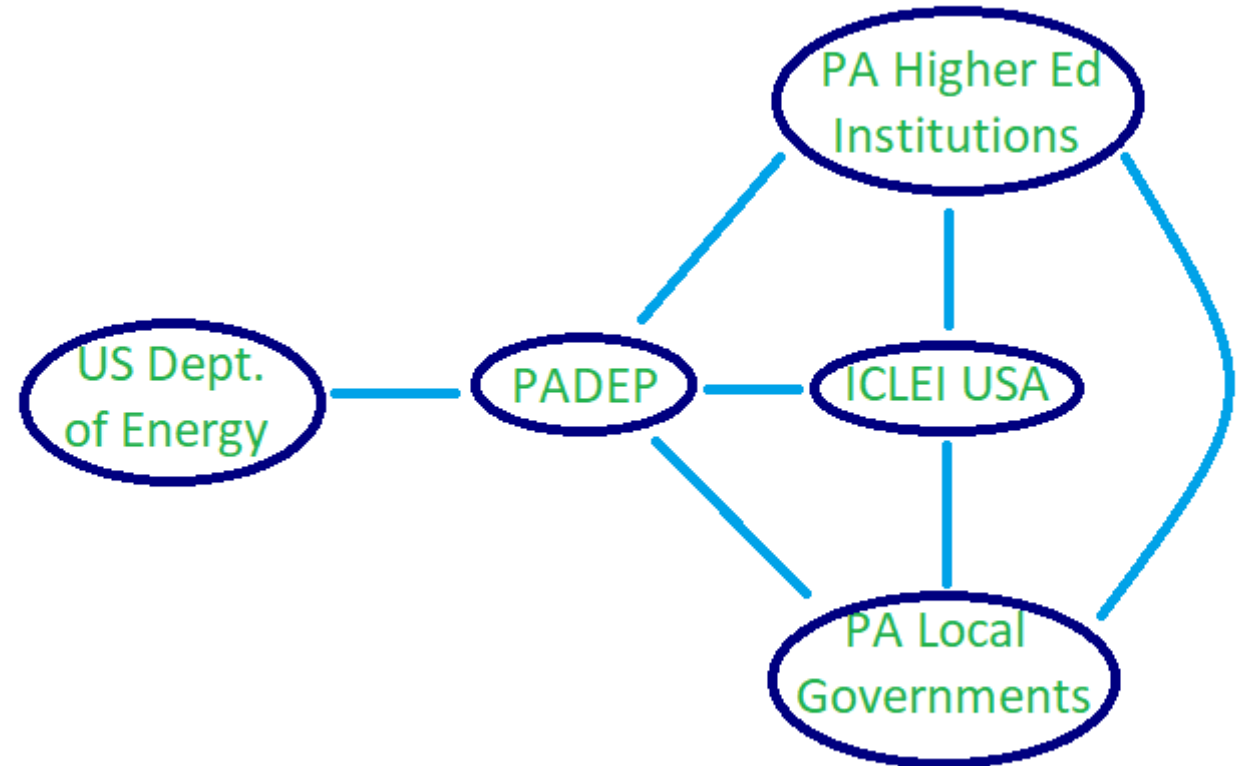
Richard Negrin, Acting Secretary

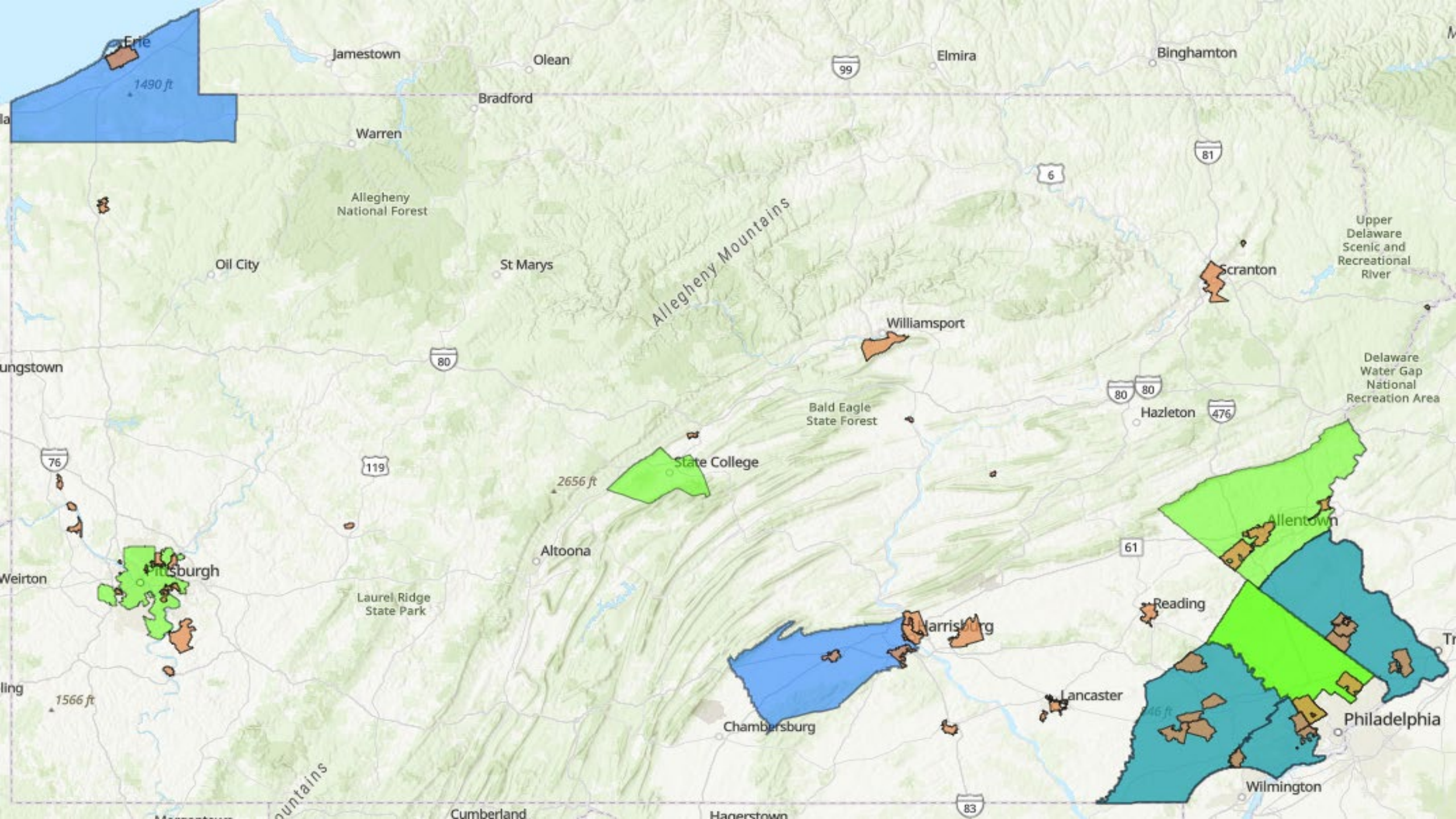


Local Climate Action Program (LCAP)

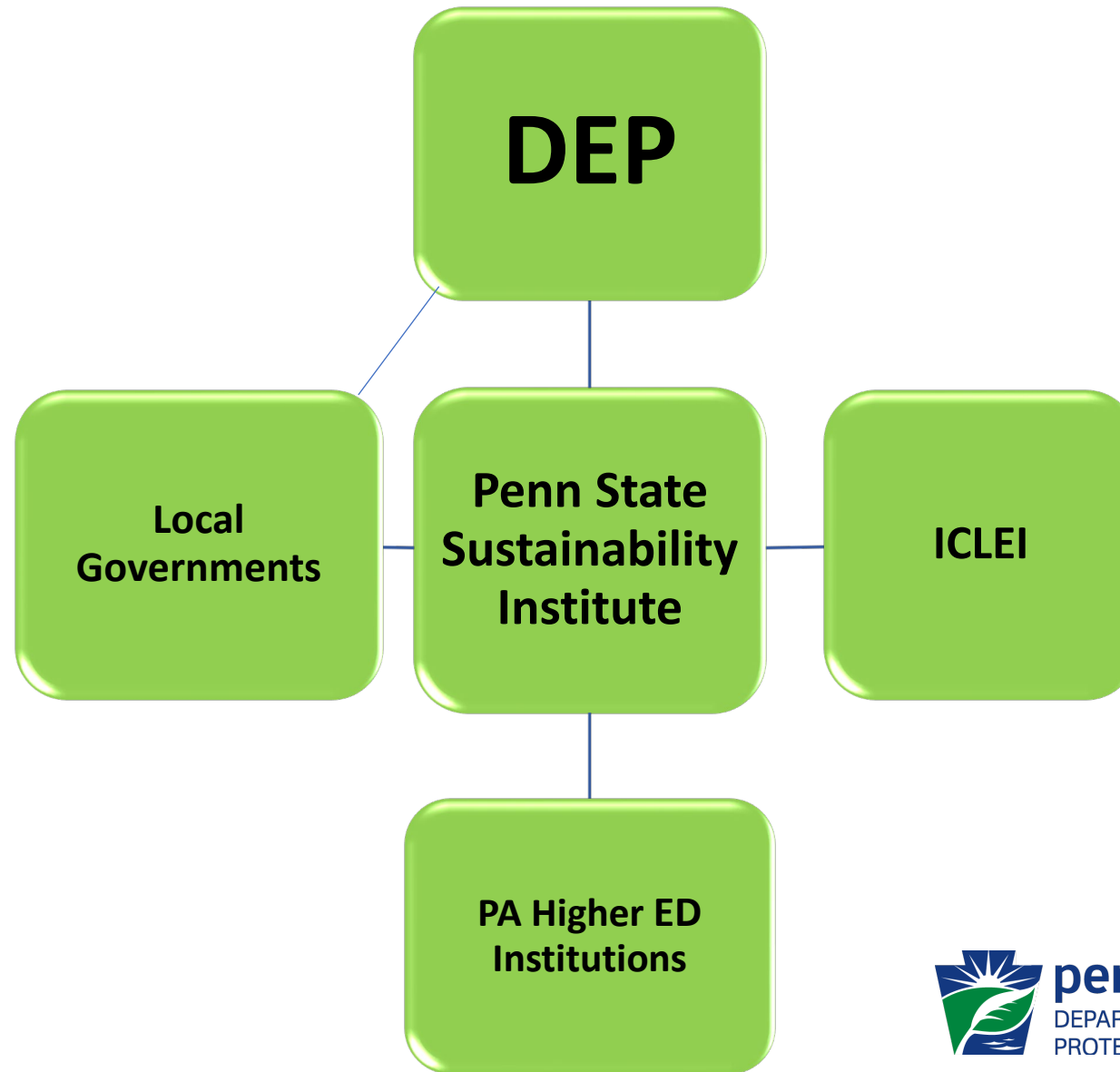
- ICLEI Local Governments for Sustainability – USA hired as contract
- College student matched with local government
- ICLEI trains student/local government on ClearPath inventory tool and climate action planning – 11 months total
- Final result: Greenhouse gas inventories and *draft* Climate Action Plans

dep.pa.gov/LocalClimateActionProgram...





LCAP Transition





Source: Nick Valla

PA DEP: MIDDLETOWN TOWNSHIP CAPSTONE INTERNSHIP PROGRAM

Aja Padovan

Senior

East Stroudsburg University

Environmental BA | Psychology BS



SHARED ENERGY MANAGER

Table 7 – SUV Replacement Options Economic Comparison

Parameter	Toyota Rav4 (ICE)	Toyota Rav4 Prime (PHEV)	Hyundai Ioniq 5 (BEV)	Chevy Bolt EUV (BEV)
Dealer Price	\$28,190	\$41,015	\$41,245	\$34,495
Gov. Incentives	\$0	\$0	\$7,500	\$7,500
Purchase Price	\$28,190	\$41,015	\$33,745	\$26,995
Annual Maintenance	\$1,000	\$800	\$500	\$500
Annual Fuel	\$981	\$297	\$210	\$210
Total Annual Cost	\$1,981	\$1,097	\$710	\$710
5-year Cost	\$38,097	\$46,502	\$37,294	\$30,543
10-year Cost	\$48,004	\$51,990	\$40,843	\$34,091
Annual CO2e (metric ton)	2.1	1.0	0.6	0.6



LED Street Light Upgrade Locations

Estimated 1300 total City-owned street lights. Estimated 715 poles with 752 fixtures to be upgraded to LED. Estimated , of which estimated 408 are eligible for CDBG funding (Residential, LowMod, not Flood Plain). Currently, fixtures are a mix of High-Pressure Sodium Vapor, Mercury Vapor and Metal Halide.

Prepared: 8/27/2020
by Kevin Lugo, SSW Manager



Easton Wastewater Treatment Plant RNG Opportunity

PATRICK MARTIN & MICHAEL STAHLY
WILSON ENGINEERING SERVICES, PC



This presentation is provided through support and funding from the U.S. Department of Energy's State Energy Program and the Pennsylvania Department of Environmental Protection.

Shared Energy Manager Results

Table 1: Quantitative Totals for Identified Energy Management Opportunities¹

Year 1

Municipality	Annual Cost Savings (\$)	Incentive Funding Potential ² (\$)	Electric Savings (kWh)	Natural Gas Savings (MCF)	Annual GHG Emissions Reduction (MT CO ₂ e) ³
Bellefonte Borough	\$141,097	\$106,310	2,359,715	0	857
Chester County	\$82,210	\$57,381	1,426,581	0	272
City of Reading	\$17,378	\$16,949	182,783	632	34
Elizabeth Township	\$26,054	\$148,265	129,770	101	22
Indiana Borough	\$158,933	\$398,530	1,089,564	710	275

Table 1 - Quantitative Totals for Identified Energy Management Opportunities

Year 2

Municipality	Estimated Savings (\$/yr)	Estimated Incentive Potential (\$)	Estimated Electric Savings (kWh/yr)	Estimated NG Savings (mmBtu/yr)	Estimated Gasoline/Diesel Savings (gal/yr)	Estimated GHG Emissions Reduction (MT CO ₂ e/yr)
Abington Township	\$16,863	\$21,451	-139,126	23,764	-	136
Ben Avon Borough	\$13,711	\$2,514	-101,220	2,030	-	54
Cumberland County	\$31,792	\$266,070	258,102	-	2,428	98
City of Easton	\$379,596	-	116,992	528	-	64
City of Shamokin	-	-	-	-	-	-

ENERGY SAVINGS PERFORMANCE CONTRACTING (ESPC)

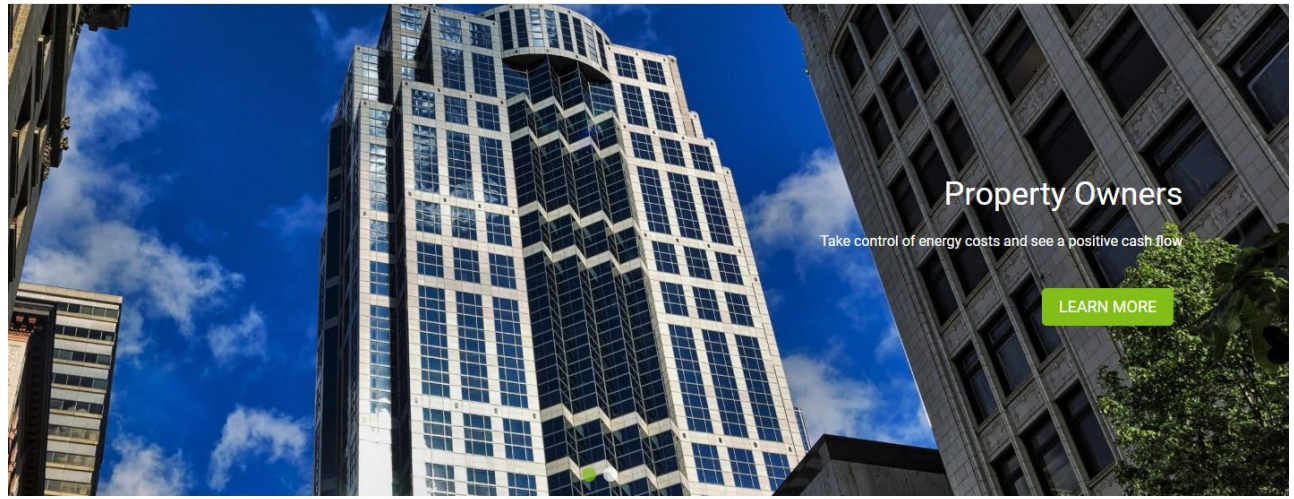
Through Pennsylvania's Guaranteed Energy Savings Act (GESA)

Energy Efficiency and Conservation Block Grant Program

Overview

OFFICE: State and Community Energy Program	NEW PROGRAM: No
FUNDING AMOUNT: \$550,000,000	FUNDING MECHANISM: Formula and Competitive Grants
RECIPIENTS: State/Local Government/Tribes	PERIOD OF AVAILABILITY: Available until expended

SEM Expanded Scope and Size



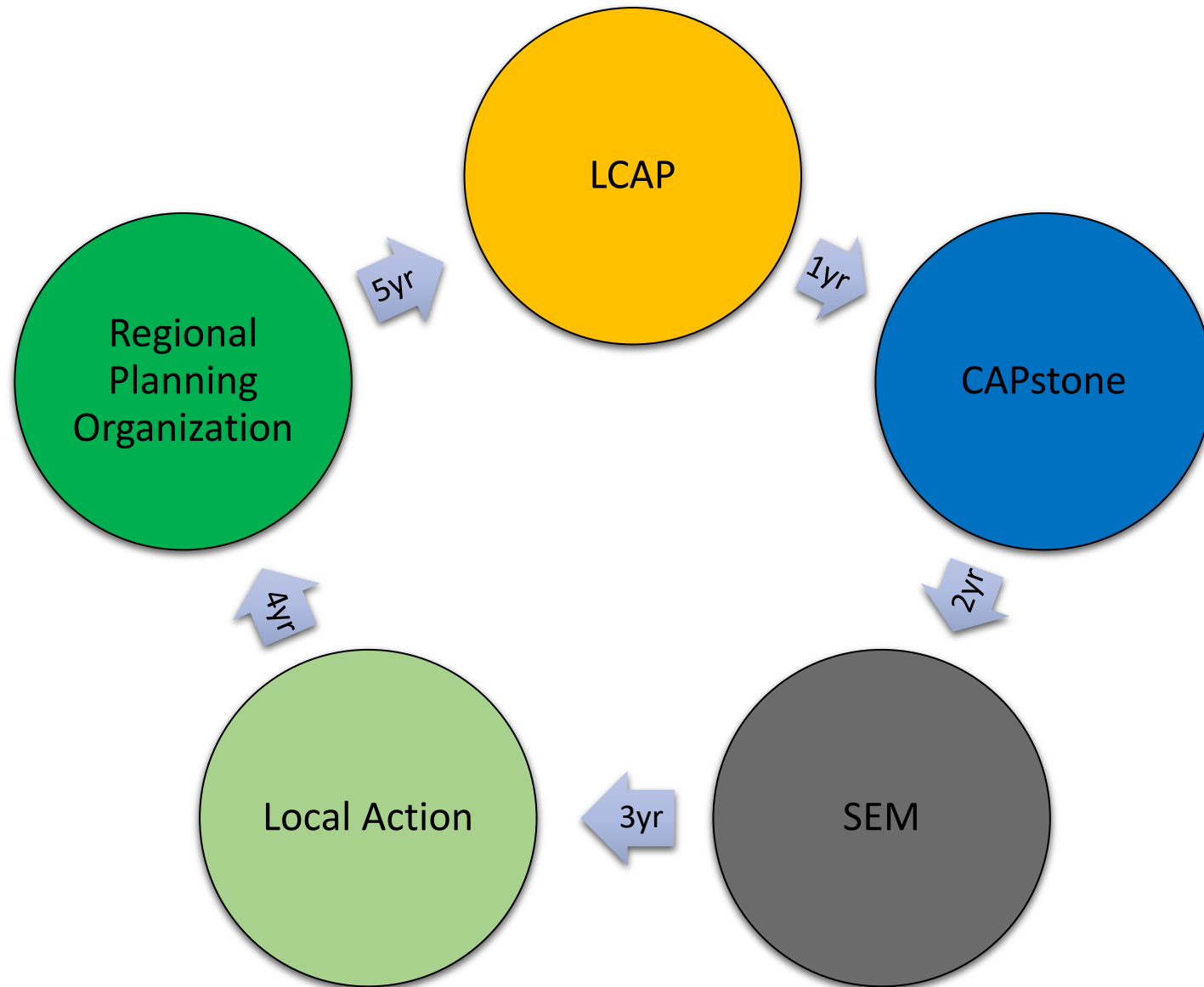
Property Owners
Take control of energy costs and see a positive cash flow

[LEARN MORE](#)

Pennsylvania C-PACE

Duquesne Light Company - Residential Energy Efficiency Program
Duquesne Light Co residential energy efficiency rebate program

What's Next





If you are interested in SEM or
CAPstone,
please contact:

Christopher Nafe

Energy Program Specialist
PADEP Energy Programs Office

chnafe@pa.gov

717-783-9726

DEP Website: www.dep.pa.gov